



1. Difference between Chordates & Non-Chordates is that the former-

- A. Lacks Notochord
- B. Has gill slits
- C. Has dorsal heart
- D. Post Anal tail is absent

Biology at Ease



2. CNS in Non-Chordates is-

- A. Dorsal Hollow Single
- B. Dorsal Hollow Double
- C. Ventral Solid Double
- D. Ventral Solid Single

Biology at Ease



3. Statement I- Chordates have single set pharyngeal gill slits.

Statement II- Chordates have closed circulation.

Which of the following is correct ?

- A. Statement I is true & Statement II is False
- B. Statement I & II both are False
- C. Statement I is False & Statement II is True
- D. Statement I & II both are True



4. Which of the following is NOT a subphyla of Phylum Chordata?

- A. Prochordata
- B. Urochordata
- C. Cephalochordata
- D. Vertebrata

Biology at Ease



5. Notochord in Cephalochordata is-

- A. Restricted to the tail region in adults as well as larvae
- B. Present only in larval tail
- C. Present only in adult tail
- D. Present from head to tail & persists throughout life



6. Which of the following is NOT a member of Subphylum Urochordata-

- A. Salpa
- B. Amphioxus
- C. Ascidia
- D. None.

Biology at Ease



7. Which of the following is NOT correct w.r.t. Vertebrates?

- A. All vertebrates are chordates
- B. Notochord is replaced by Bony Vertebral Column
- C. All Chordates are vertebrates
- D. Both B & C



8. Statement I- Ventral muscular heart.
Statement II- Kidneys for excretion.
Which of the following is correct w.r.t. Vertebrates?

- A. Statement I is true & Statement II is False
- B. Statement I & II both are False
- C. Statement I is False & Statement II is True
- D. Statement I & II both are True



9. Which of the following is NOT correct for Vertebrates?

A. Pisces bear limbs

B. Agnatha lacks jaws

C. Gnathostomata bears jaws

D. Tetrapoda bears limbs



10. Statement I- Cyclostomata members are endoparasites on fishes.
Statement II- Osteichthyes have 6-15 pairs of gill slits.
Statement III- Larvae of Cyclostomata returns to freshwater.
Statement IV- Adults of Cyclostomata die after spawning.

Identify the above statements as True(T) and False(F):-

- A. TTFF
- B. TTFT
- C. FFFT
- D. FTFT



11. Match the Following:-

a. Angel fish	i. Myxine
b. Hagfish	ii. Scoliodon
c. Great white shark	iii. Pterophyllum
d. Dog fish	iv. Carcharodon

- A. a-ii, b-i, c-iv., d-iii
- B. a-i, b-iv, c-ii, d-iii
- C. a-iii, b-ii, c-i., d-iv
- D. a-iii, b-i, c-iv., d-ii



12. Which of the following is an example of Chondrichthyes?

- A. Angel fish
- B. Dog fish
- C. Lamprey
- D. Hag fish

Biology at Ease



13. Cartilaginous fishes have-

- A. Terminal Mouth
- B. Operculum
- C. Placoid scales
- D. 5-16 pairs of gill slits

Biology at Ease



14. Statement I- Bony fishes have to swim constantly.

Statement II- In female cartilage fishes, pelvic fins bear claspers.

Which of the following is Correct?

A. Statement I is False & II is True

B. Statement I & II are False

C. Statement I & II are True

D. None.



15. Statement I- Torpedo has poisonous sting.
Statement II- Trygon has electric organs.
Statement III- Bony fishes have ctenoid scales.
Statement IV- Magur is a marine bony fish.

Identify the above statements as True(T) and False(F):-

- A. FFTF
- B. TTFT
- C. FFFT
- D. FTFT



16. Match the Following-

a. Rohu	i. Exocoetus
b. Clarias	ii. Labeo
c. Flying fish	iii. Magur

A. a-i b-ii c-iii

B. a-i b-iii c-ii

C. a-ii b-i c-iii

D. a-ii b-iii c-i

Biology at Ease



17. Function of air bladder is to-

- A. Keep the blood cold
- B. Avoid sinking
- C. Regulate Air flow
- D. Increase the breathing rate

Biology at Ease



18. Statement I- Body of amphibians are divided into Head, Trunk & Tail.
Statement II- Tympanum represents ear.

Which of the following is true?

- A. Statement I is True & II is False
- B. Statement II is True & I is False
- C. Statements I&II both are False
- D. None



19. _____, _____, _____ open into common chamber _____.

- A. Urinary, alimentary, respiratory tract, Cloaca
- B. Urinary, alimentary, respiratory tract, Brood Pouch
- C. Urinary, alimentary, reproductive tract, Cloaca
- D. Urinary, alimentary, reproductive tract, Brood Pouch



20. Match the Following-

a. Hyla	i. Tree frog
b. Rana	ii. Frog
c. Bufo	iii. Toad

A. a-i b-ii c-iii

B. a-i b-iii c-ii

C. a-ii b-i c-iii

D. a-ii b-iii c-i

Biology at Ease



21. Heart in Amphibians is-

- A. Three chambered with 1 auricle & 2 ventricles
- B. Two chambered with 1 auricle & 1 ventricle
- C. Three chambered with 2 auricles & 1 ventricle
- D. Four chambered heart



22. Statement I- Reptiles have epidermal scutes.
Statement II- Crocodiles have 3 chambered heart.

Which of the following is true?

- A. Statement I is True & II is False
- B. Statement II is True & I is False
- C. Statements I&II both are False
- D. None



23. Which of the following is NOT true about Reptiles?

- A. They have 3 chambered heart with some exceptions.
- B. Only Lizards & Chameleons shed their scales as skin cast.
- C. They have creeping & crawling mode of locomotion.
- D. Sexes are separate



24. Choose the correct option-

A. Tree Lizard:Hemidactylus :: Calotes:Garden lizard

B. Calotes:Garden Lizard :: Bangarus:Cobra

C. Chameleon:Tree lizard :: Testudo:Turtle

D. None



25. How many of the following are Poikilotherms?

Naja, Aptenodytes, Struthio,
Calotes, Chelone, Ichthyophis,
Macropus, Testudo

- A. 4 ONLY
- B. 5 ONLY
- C. 6 ONLY
- D. ALL



26. Read the following and Identify the organism which has these features-

- i.) Crop & Gizzard in digestive system
- ii.) Dry skin
- iii.) Fully Ossified Endoskeleton

- A. Testudo
- B. Balaenoptera
- C. Psittacula
- D. Vipera



27. Which of the following is Correct w.r.t. Aves?

- A. Fertilisation is internal & development is direct or indirect
- B. Fertilisation is internal & development is Direct
- C. Fertilisation is internal & larvae is not same as adult
- D. Fertilisation is external & development is direct or indirect.



28. Most unique feature of mammals is presence of-

- A. Hair on body
- B. Oil Glands
- C. Mammary glands
- D. Long Bones

Biology at Ease



29. What is NOT the function of two pairs of limbs of Mammals?

- A. Walking
- B. Swimming
- C. Flying
- D. Crawling

Biology at Ease



30. Match the Following-

a. Pavo	i. Flightless
b. Struthio	ii. Crow
c. Neophron	iii. Vulture

A. a-i b-ii c-iii

B. a-i b-iii c-ii

C. a-ii b-i c-iii

D. a-ii b-iii c-i



31. Statement I-Ornithorhynchus is egg-laying vulture.
Statement II-Mammals have pinnae/external ear.
Statement III-Development in mammals is indirect.
Statement IV-Pteropus is Flying Fish.

Identify the above statements as True(T) and False(F):-

- A. TTFF
- B. TTFT
- C. FTFT
- D. FTFF



32. Pneumatic Bones –

- A. Have air cavities
- B. Have Oil Glands
- C. Are Long and Heavy
- D. Both A & B

Biology at Ease



33. Which of the following is NOT a Mammalian feature?

- A. Oil Glands
- B. Teeth
- C. Mammary Glands
- D. Hair

Biology at Ease



34. How Many of the following features pertain to the organism given?

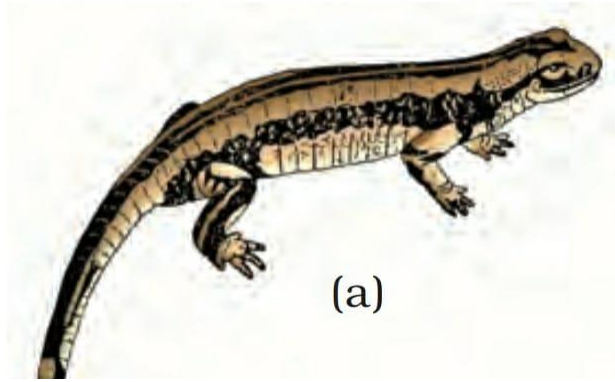
- 2 pairs of gill slits
- Circular mouth with jaws
 - Devoid of scales
 - Bony Skeleton
 - Lamprey

- A. 1 ONLY
- B. 2 ONLY
- C. 3 ONLY
- D. ZERO





35. The following organism has all the given features except-



- A. 3 Chambered Heart
- B. Shed its skin
- C. Poikilotherm
- D. Sexes are separate

Biology at Ease

ANIMAL KINGDOM (CHORDATA)



Biology at Ease
NEET Biology

Answers

- 1) B
- 2) C
- 3) C
- 4) A
- 5) D
- 6) B
- 7) D
- 8) D
- 9) A
- 10) C
- 11) D
- 12) B
- 13) C
- 14) B
- 15) A
- 16) D
- 17) B
- 18) B
- 19) C
- 20) A

- 21) C
- 22) A
- 23) B
- 24) D
- 25) B
- 26) C
- 27) B
- 28) C
- 29) D
- 30) C
- 31) D
- 32) A
- 33) A
- 34) B
- 35) B